



LION

Local Information Online Nottingham

Your directory for information, advice and guidance

Brought to you by



What do you want to Ask Lion?

in

Place name or postcode

Search

Karla Banfield

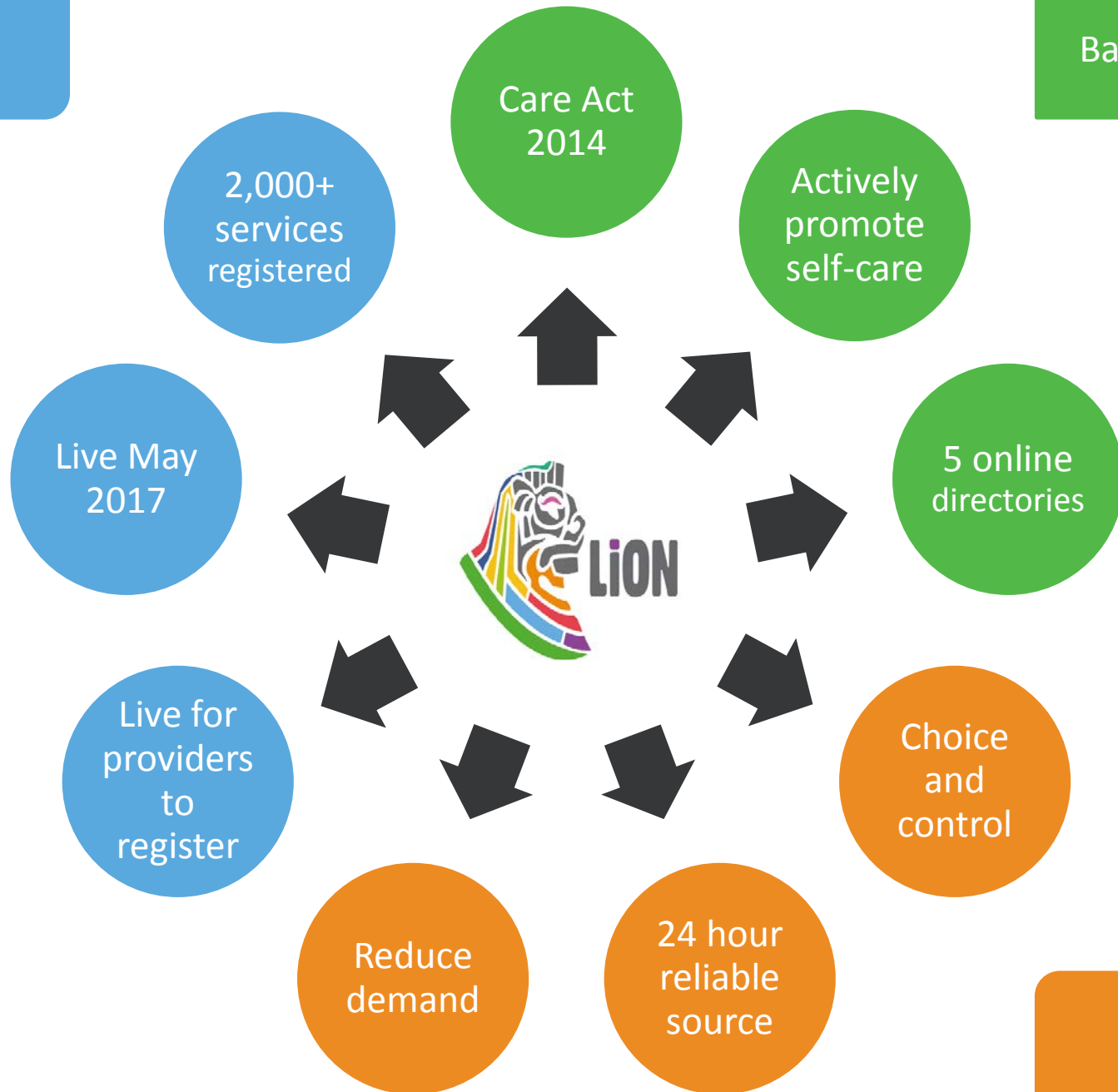
Market and Business Partnership Manager

www.asklion.co.uk

Your community directory.
Helping you find activities and support.

Current
Position

Background



Aims

**LION**

Local Information Online Nottingham
Your directory for information, advice and guidance

Brought to you by



What do you want to Ask Lion

on

Place name or postcode

Search

[Home](#)[What's on](#)[A to Z list](#)[Contact us](#)[Create a free account](#)[My List](#)[Login now](#)

Free Childcare

The Early Learning Programme offers free childcare places for eligible 2 year olds. Click Here to find out more.



Help at Home

Do you need help at home? Please search our selection of services to help you live more independently at home.



Carers

Are you a carer? Do you need help or support? Please search our selection of services to help you.



Feeling Lonely?

Feeling Lonely? You may be young or old, in a relationship or on your own. For support and help click here.



Homes and housing



Healthy lifestyle



Children and families



Education and training



Things to do



Money and work



Health and self care



Special Educational Needs and Disabilities Local Offer



Register your group, service, activity or club now



Medium-term vision

- Bring together a variety of services, activities and groups
- Citizens and workforce know how to find information and services locally
- Develop an 'app' style product that can be included on all mobile devices & PC's
- Marketing of LiON will be happening now
- Developing videos (30/60 seconds)

Long-term vision

- LiON becomes a citizen hub, which is more than an online directory, but is at the heart of helping citizens to make healthy life choices.
- Citizens will be knowledgeable about the services within their community
- The workforce will be knowledgeable about services and activities available to citizens

Key Asks

- Promote LiON and encourage
 - Groups, organisations, services to register on LiON
 - The workforce to use it when searching for local activities and services for citizens
 - The workforce and citizens to tell us what we don't know – which group, activity or service is not on LiON

lion@nottinghamcity.gov.uk